

Buug yarahan

Haddii aad jeclaan lahayd nuqulo badan oo ku saabsan Buug yarahaha ama Buug yaraha ku qoran farta dhegooklayaasha ama qaababka kale ama luqaddaha, fadlan wac **0800 1777 990** ama iimayl healthiernwl@nw.london.nhs.uk



North West London Collaboration of
Clinical Commissioning Groups

Waxa uu u beddelaa adeegyada carruurta ee Cubitaalka Ealing

Laga bilaabo 30 Juun 2016 halka aanu ka xanaanayno
ilmahaaga gurmادku waa uu isbeddelayaa



Haddii aad tahay waalid ama daryeele, fadlan akhri buug yarahan si aad wax badan u ogaato.

Ma doonaysaa macluumaad dheeraad ah?

Haddii aad hayso wax su'aalo ah oo ku saabsan isbeddelada buug yarahan ama macluumaad dheeraad ah oo ku saabsan adeegyada carruurta Waqooyi Galbeed London, fadlan la xidhiidh healthiernwl@nw.london.nhs.uk ama wac **0800 1777 990**.

Waxaa jiri doona isbeddelo adeegyada carruurta qaarkeed xaga Cusbtaalka Ealing laga bilaabo 30 ka Juune 2016.

- Laga bilaabo 30 Juun daryeelka degdega ah ee carruurta weli waxaa la heli doonaa 24 saacadood maalintii xaga Cusbtaalka Ealing iyaddoo la marayo xarunta daryeelka degdega ah (UCC).
- Ambalaasyadu waxay joojin doonaan in ay carruurta qaadaan A& Eee Cusbtaalka Ealing.
- Waadhka carruurta ee habbeenka la joogo ama "bukaan jiiifka ah" waxaa la xidhi doonaa waadhka.
- Gurmadka nolosha halis gelinta ah wac 999.
- Ambalaasyadu waxay u qaadi doonaan carruurta cusbitaalka ta carruurta ee A&E. Tani waxay noqon doontaa: West Middlesex, Hillingdon, Northwick Park, Chelsea iyo Westminster, ama cusbitaalka St Mary iyaddoo ku xidhan baahida ilmahaaga.
- Haddii ilmahaagu caadi ahaan isticmaalo adeegyada habbeen joogida ah ee Cusbtaalka Ealing, shaqaalaha cusbitaalka waxay kaala hadli doonaan daryeelka ilmahaaga adiga.
- Isbeddeladan waxay horumarinayaan wax ku saabsan horumarinta daryeelka carruurta dhammaan Waqooyi Galbeed London, iyagoo bixinaya helitaan wanaagsan oo dhakhaatiir takhasus leh oo hore u soo shaqeeyay muddada maalinta iyo habeenka.

Dhammaan adeegyada carruurta kale waxaa ka mid ah rugaha maalinta iyo ballamaha bukaan socodka waxa uu joogi doonaa Cusbtaalka Ealing oo waa in aad u isticmaashaa si caadi ah. Liiska buuxa ee adeegyada carruurta waxaa laga heli karaa www.lnwh.nhs.uk/children-ealing-hospital

Tusmadda

- 3 Waxa la samaynay haddii ilmahaagu ubaahado daryeelka degdega ah ee gudaha Ealing
- 4-5 Faraqa u dhexeeya daryeelka degdega ah iyo gurmadka
- 6-9 Sida xarunta daryeelka degdega ah ee Ealing u shaqayso
- 10 Sida loo helo xarunta daryeelka degdega ah ee Cusbtaalka Ealing
- 11 Adeegyada kale

Waxa la samaynayo haddii ilmahaagu u baahdo daryeel degdega ah ee gudaha Ealing laga bilaabo 30 Juun 2016



- In Gurmadka nolosha halis gelinta ah wac 999.
- Haddii aanay ahayn xaalad nolosha halis gelinaysa, waxaad tegi kartaa xarunta dareelka degdega ah ee Ealing (UCC) (eeg hoos), booqo/wac Dhakhtarkaaga ama wac NHS 111.
- Daryeelka degdega ah waxaa weli bixin doona xarunta daryeelka degdega ah ee Cusbtaalka Ealing (UCC) 24 saacadood, 7 maalmood todobaadkii. UCC waxay wadaagtaa Soo dhowayn isku mid ah sida dadka waa wayn ee Ealing A & E.
- Ealing UCC waxay ka dawaysaa carruurta xanuunka yar iyo dhaawacyada degdega ah aan ahayn kuwa nolosha khatar gelinaya, sida: murkacashada iyo kala baxa, jaritaanka yar, gubshada yar, laabta, dhegta ama caabuqa hunguriga iyo lafaha yare ee jabay (bogga 4 waxa uu sharaxaa wax badan).
- Haddii ilmahaagu u baahanyahay daryeel khabiir oo ka badan ka xarunta daryeelka degdega ah uu bixin karo, waxaa si badbaado ah loogu wareejiinayaa cusbitaal kale maca adiga. Tusaalooyinka sida tan u shaqayn doonto waxay ku yaalaan bogga 8 iyo 9.

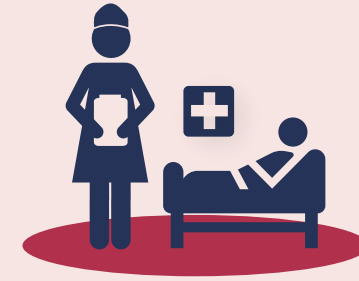
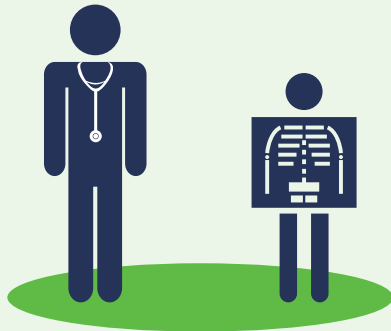
Faraqa u dhexeeya gurmada iyo daryeelka degdega ah

Daryeelka degdega ah

Xarunta daryeelka degdega ah ee Cusbitaalka Ealing 24/7 daryeelka degdega ah, ee dawaynaya carruurta iyo dadka waa wayn ee xanuunka yar qabta iyo dhaawacyada degdega ah laakiin. Aan nolosha halis galinayn, tusaale ahaan:

- murkacashada iyo kala baxa
- gubashada yar ee meelaha yar yar
- jaritaanada yar ay ka mid yihiin kuwa u baahan tolitaanka
- caabuqa badankiisa sida laabta, dhegta ama hunguriga
- lafaha jabay ee yar sida suulka, kuraanta, cummaacumta, faraha ama kaxanta.

Haddii ilmahaagu u baahdo daryeel dhakhtar takhasus leh oo ka badan xarunta daryeelka degdega ah ay bixin karto, waxaa si badbaado ah loogugal wareejin donaa cusbitaal kale adiga. Boggaga 8 iyo 9 waxay sharaxaan sida tani u dhici doonto.



Daryeelka Gurmada ah

Waaxaha Shilka iyo Gurmada (A&E), waxay bixiyaan daryeelka gurmada ah ee kuwa ugu wayn **nafta halis gelinaya** xanuunka iyo dhaawacyada, kuwaas oo keeni kara joogitaanka cusbitaalka, tusaale ahaan:

- lulo iyo miyir beelid
- xanuun darran oo laabta ama caloosha ah
- dhibaatooyinka neefsiga
- mergashada
- dhiig bax darran oo aan joogsanayn
- liqitaanka kimikdada
- in uu qofku cadhoodo
- lafo six un u jabay, ay ka mid tahay lugaha
- gubdho xun
- finan aan ku qarsoomin cadaadiska murayada.

Haddii ilmahaaga ay dhib ka soo gaadhay wax kuwa sare ah, waa in aad garaacdaa 999 isla markaaba si aad u hesho ambalaaska.

Fiiro: Kani waa liiska tusaalooyinka qaarkood, haddii ilmahaagu u bahaanyahay caawimo degdega ah garaac 999.

Fiiro: Ealing A&E way u sii furnaan doontaa dadka waa wayn laga bilaabo 30 Juun 2016.

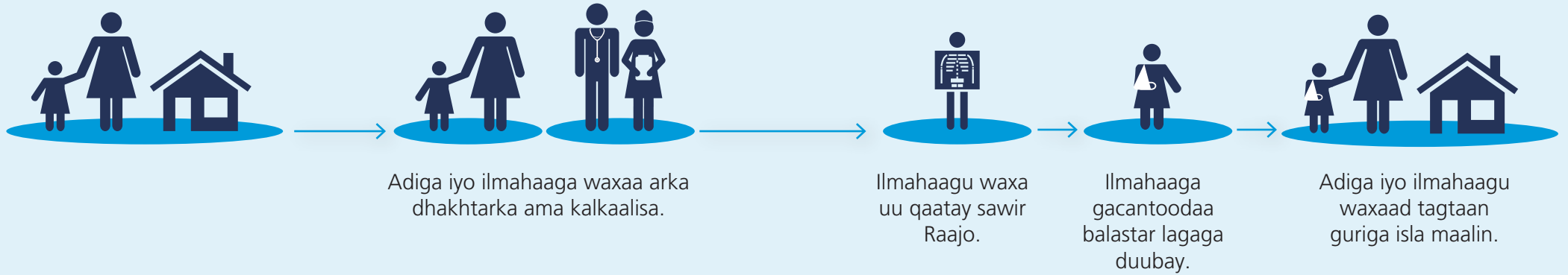
Sida xarumaha daryeelka degdeg ah ee Ealing u shaqayso

Tusaale ahaan **daryeelka degdega ah** ee lagu bixiyo Cusbitaalka Ealing xarunteeda daryeelka degdeg ah iyo waxa aad ka fili karto in ay dhacaan

Adiga iyo ilmahaagu waxay yimaadaan xarunta daryeelka degdeg ah, ee ilmahaagu haysto:

Badanka carruurta loo qaado maaha ambalaas) xarunta daryeelka degdega ah ee Cusbitaalka Ealing ee ugu baahan sii degdeg ah daryeelka isla maalintaas ee lagu daweeyo xarunta daryeelka degdega ah.

Cummaamuc jabtay oo laga shakisanyahay



Xiiqda degen

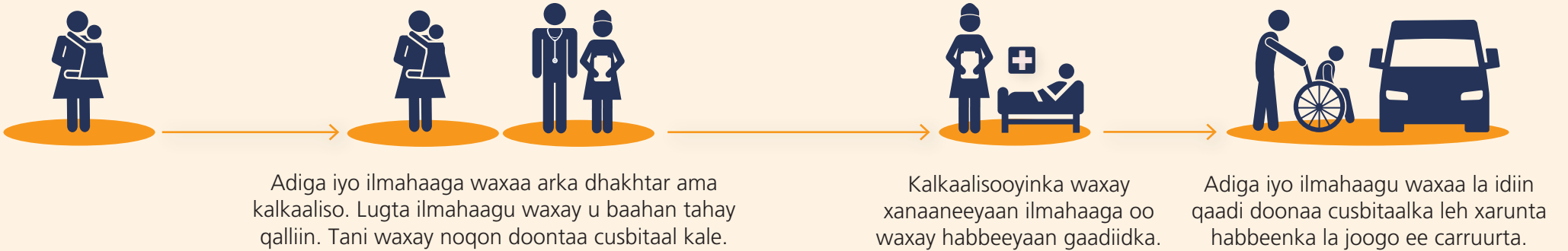


Sida xarumaha daryeelka degdeg ah ee Ealing u shaqayso

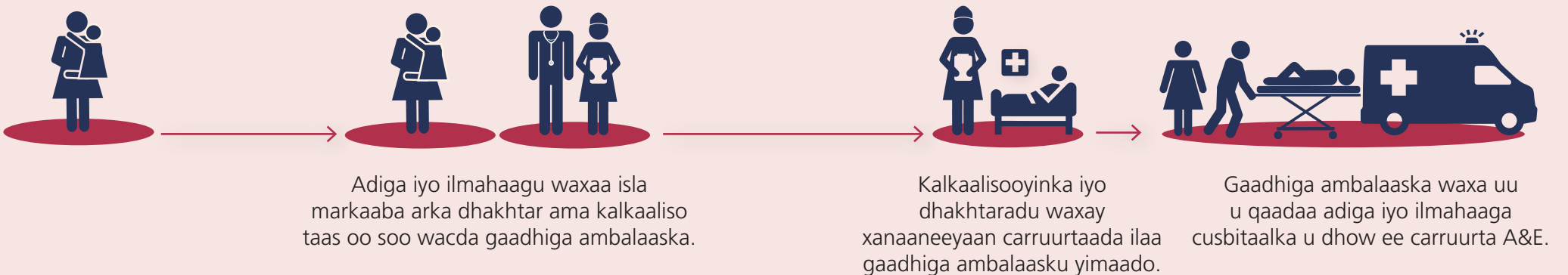
Haddii aad timaado xarunta daryeelka degdega ah (UCC) ee Cubitaalka Ealing **oo ilmahaagu waxa uu u baahanyahay daryeel dhakhtar takhasus oo ka badan inta UCC ay bixin karto**, ilmahaaga waxaa si badbaado ah loogu wareejin doonaa cusbitaal kale. Waxaa jira tusaalayaal ah waxa aad filan karto in ay dhacaan.

Adiga iyo ilmahaagu waxaad timaadaan xarunta daryeelka degdeg ah, ee ilmahaagu haysto:

Dhaawac lugta ah oo darran



Dhibaataada neefsashada.



Sida loo helo xarunta daryeelka degdega ah ee Cusbitaalka Ealing

Cusbitaalka Ealing
Uxbridge Rd
Southall
UB1 3HW
www.inwh.nhs.uk

Dhulka hoostiisa, jidaska tareenka iyo baska:

Jidaska baska 83, 207, 427, 607 iyo N207 dhammaan waxay ku xidhaan cusbitaalka istaanka Ealing Broadway ee Ta dhexe iyo Laymanka Degmadda iyo Tareenka Qaranka.



Jidaska kale:

- Khadka Dhexe ilaa Greenford, markaa baska 92 ilaa Cusbitaalka Ealing.
- Laynka Piccadilly line ilaa Boston Manor, kaib baska 195 ku socda Cusbitaalka Ealing.
- Istaanka Hanwell (Tareenka Qaran) Waxa uu ku yaalaa Church Road, ugu dhowaan 1 mayl meel u jirta cusbitaalka.

Gaadhi ahaan: Meelaha gawaadhida la dhigto waa ay xadidanyihiin oo waxaa lagu taliyaa in la raaco gaadiidka dad waynaha meesha ay suuragalka tahay. 24 saacadood lacagta booqdahu bixiyo iyo bandhiga meesha baabuurta la dhigto waxaa lagu bixiyaa xaga hore ee cusbitaalka.

Wixii ku saabsan kharashka gaadhi dhigashida
www.inwh.nhs.uk/patients-visitors/locations-of-our-services/ealing-hospital

Meel baabuurta la dhigto ee naafadda: Meelaha bilaashka ah ee baabuurta la dhigto ee darawalada naafadda ah waxaa laga heli karaa albaabka wayn. Oggolaanshaha ansaxa ah ee darawalka naafadda ah waa in la muujiyaa.

Helaha Jidka

Jidka Baska	Dhanka	Boosteejooyinka baska
83	Golders Green	G, M, P, R
92	Neasden	S
195	Brentford Charville Lane Estate	K, M, P, Z Q, W, Y
207	Southall White City	E, J, N, Q G, M, P
282	Mount Vernon Hospital	T
427	Acton Uxbridge	G, M, P E, J, N, Q
607	Uxbridge ♦ White City ♦	J, Q G, P
E3	Chiswick Greenford	A, C B, D
E8	Brentford Ealing Broadway	E, J, K, Z G, M, Y

Basaska Habeebka

Jidka Baska	Dhanka	Boosteejooyinka baska
N207	Holborn Uxbridge	G, M, P E, J, N, Q

♦ Joogsiga xadidan

Adeegyada kale



Halkan waxaa ah meelo kale oo aad tegi karto, talo ka heli karto iyo daawaynta carruurtaada.

NHS 111: Waa in aad soo wacdaa 111 haddii aanad caafimaad qabin oo aanad hubin waxa aad u baahantahay. 111 waa lambar telefoon bilaasha ah kaas oo furan 24 saacadood maalintii, todoba maalmood todobaadkii.

Farmasiyada: Farmasiilahaaga deegaanka ama famasiilahu waxa uu u tababaran yahay si sare oo waxa uu bixin karaa talo oo waxa uu soo jeedin karaa dawooyin ama daawooyin ah dhibaatooyin kala duwan, sida madax xanuunka, dhibaatooyinka caloosha, qufaca iyo hargabka.

Dhakhtarka guud (Dhakhtarka Guud)

GPs iyo kooxahoodu waxay bixiyaan adeegyo kala duwan oo qoyska oo dhan ah oo ah baahiyaha jidhka iyo kuwa caafimaad.

GPs waa aagga Ealing oo hadda haysa gaadhitaanka helitaanka carruurta degdega ah ee rugta caafimaad xaga Cusbitaalka Ealing, Oo siinaysa GPs talada dhakhaatiir takhasusleh dhanka caafimaadka carruurta iyo heliyaanka ballamaha dhakhtarka takhasuska leh.

Macluumaad dheeraad ah oo ku saabsan adeegyada daryeelka aagga deegaankaaga ah waxaa laga heli karaa
www.nhs.uk