

AZURE De-Identified Server Access

AZURE De-Identified Server Access

- Please follow these instructions to access the WSIC database on the AZURE De-Identified Server, and contact us if you have any further issues at **nwlccgs.wsic.deidentified@nhs.net**

AZURE De-Identified Server Access - Instructions

1) Go to https://remote2.sussex.nhs.uk/dana-na/auth/url_26/welcome.cgi to log in, using your NHSLocal account details for your username and Primary Password, and the Swivel code as your secondary password (this will be an 8-digit number created by the Swivel AuthControl app) to log in to the system

NHS

Welcome to
Secure Access SSL VPN

Username

Primary Password


Secondary Password

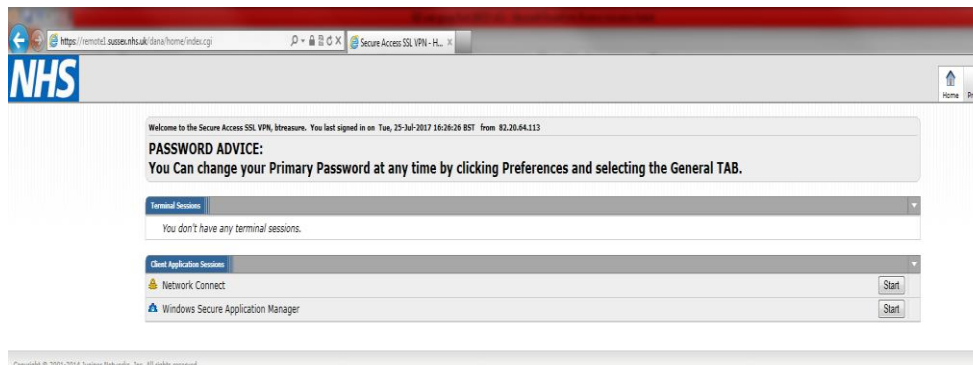
Please sign in to begin your secure session.

Advanced Notice:

VPN Service has been upgraded, please report any issues to the IT Servicedesk

AZURE De-Identified Server Access - Instructions

2) Once you have logged in, you will then see this screen. If the blue Secure Application Manager is present in your system tray  , this means that you have successfully connected to the CSU environment where the dataset is hosted. You are now finished with the website.



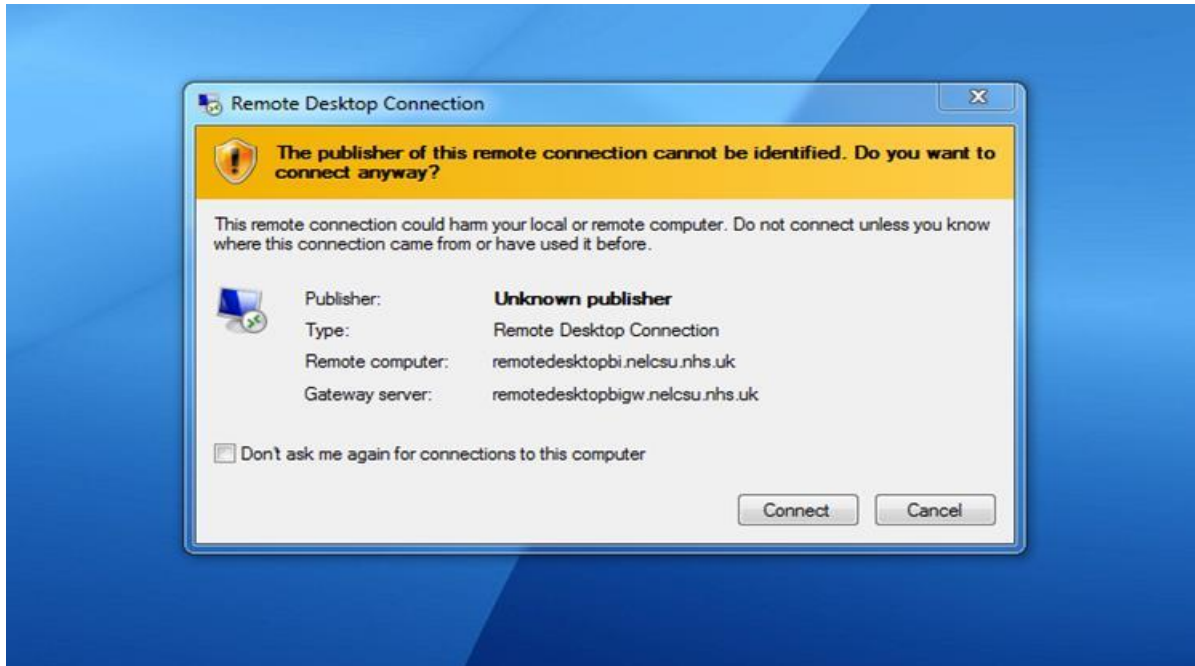
3) From there, you will still need to remotely access the AZURE De-Identified Server itself. This is done through a Remote Desktop Connection (RDC) to Azure BI Research User.rdp. Double click the Azure BI Research User.rdp icon shown below to connect to Azure. You can copy the attached Azure BI Research User.rdp to your desktop.



Azure BI Research User.rdp

AZURE De-Identified Server Access - Instructions

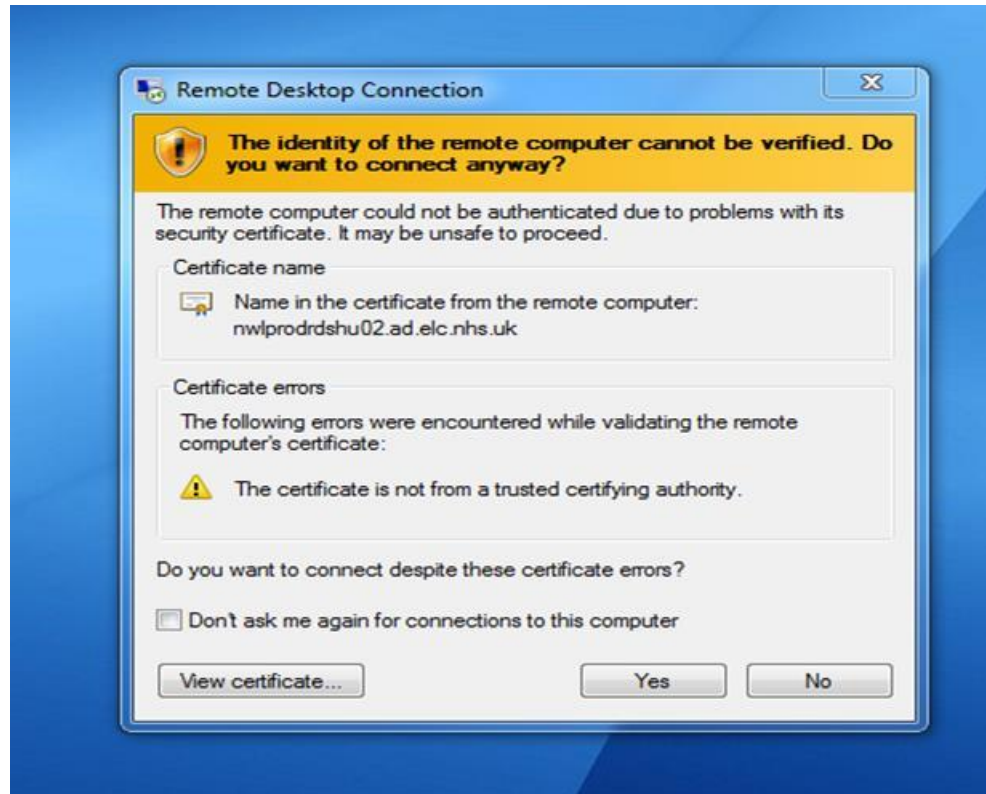
4) Then the below screen appears and click **Connect**.



5) Then enter your credentials – username **NHSLOCAL \ username and password**. In the “username” box, type “NHSLOCAL\YOUR NHSLOCAL USERNAME” – i.e. the same username you used to log into the website. In the “password” box, type the primary password associated with your NHSLocal account i.e. the same password you used to earlier log into the website.

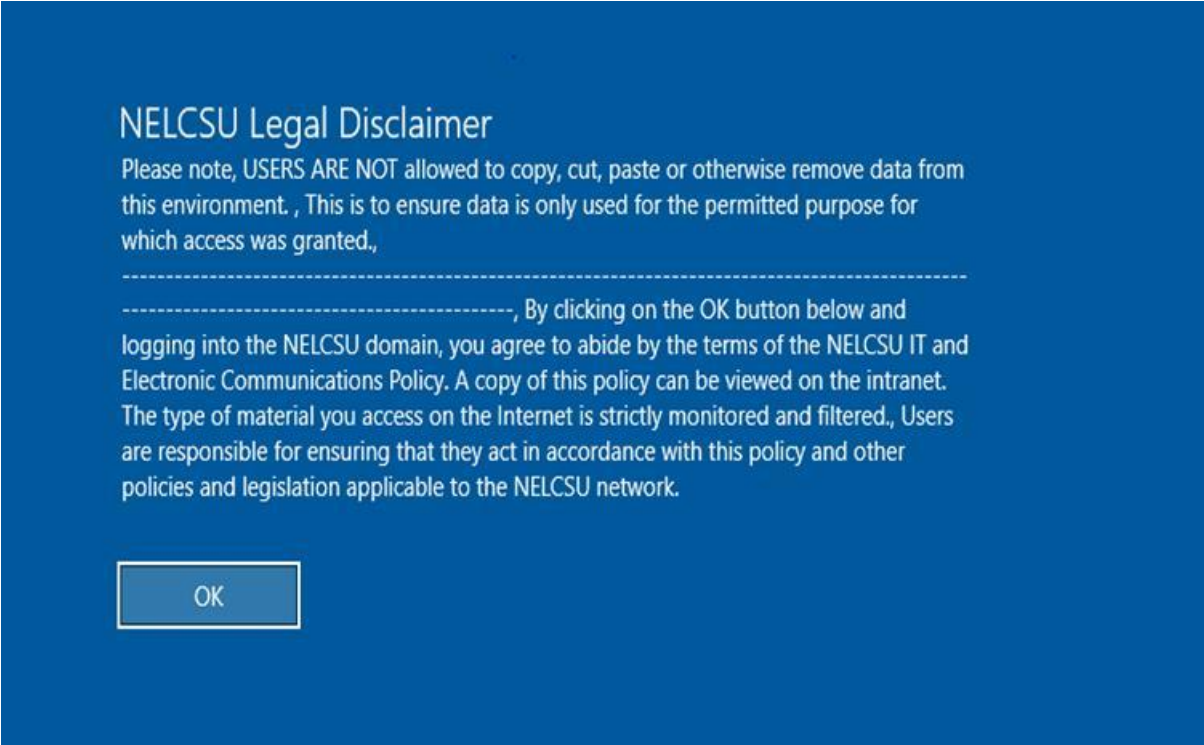
AZURE De-Identified Server Access - Instructions

6) You may then see a pop-up confirming if you wish to connect to the remote computer – click “Yes” (Note: this will appear every time you log in, unless you tick the box marked “Don’t ask me again”)



AZURE De-Identified Server Access - Instructions

7) You will then see the following screen, Click OK.



NELCSU Legal Disclaimer

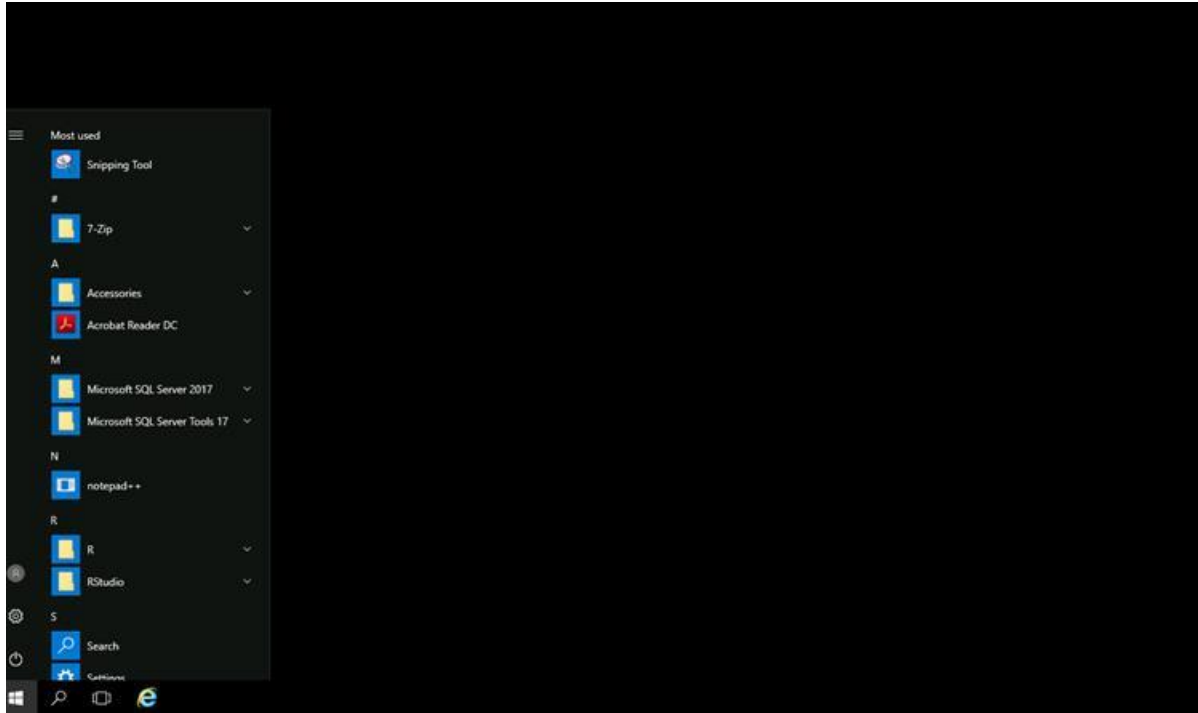
Please note, USERS ARE NOT allowed to copy, cut, paste or otherwise remove data from this environment. , This is to ensure data is only used for the permitted purpose for which access was granted.,

-----, By clicking on the OK button below and logging into the NELCSU domain, you agree to abide by the terms of the NELCSU IT and Electronic Communications Policy. A copy of this policy can be viewed on the intranet. The type of material you access on the Internet is strictly monitored and filtered., Users are responsible for ensuring that they act in accordance with this policy and other policies and legislation applicable to the NELCSU network.

OK

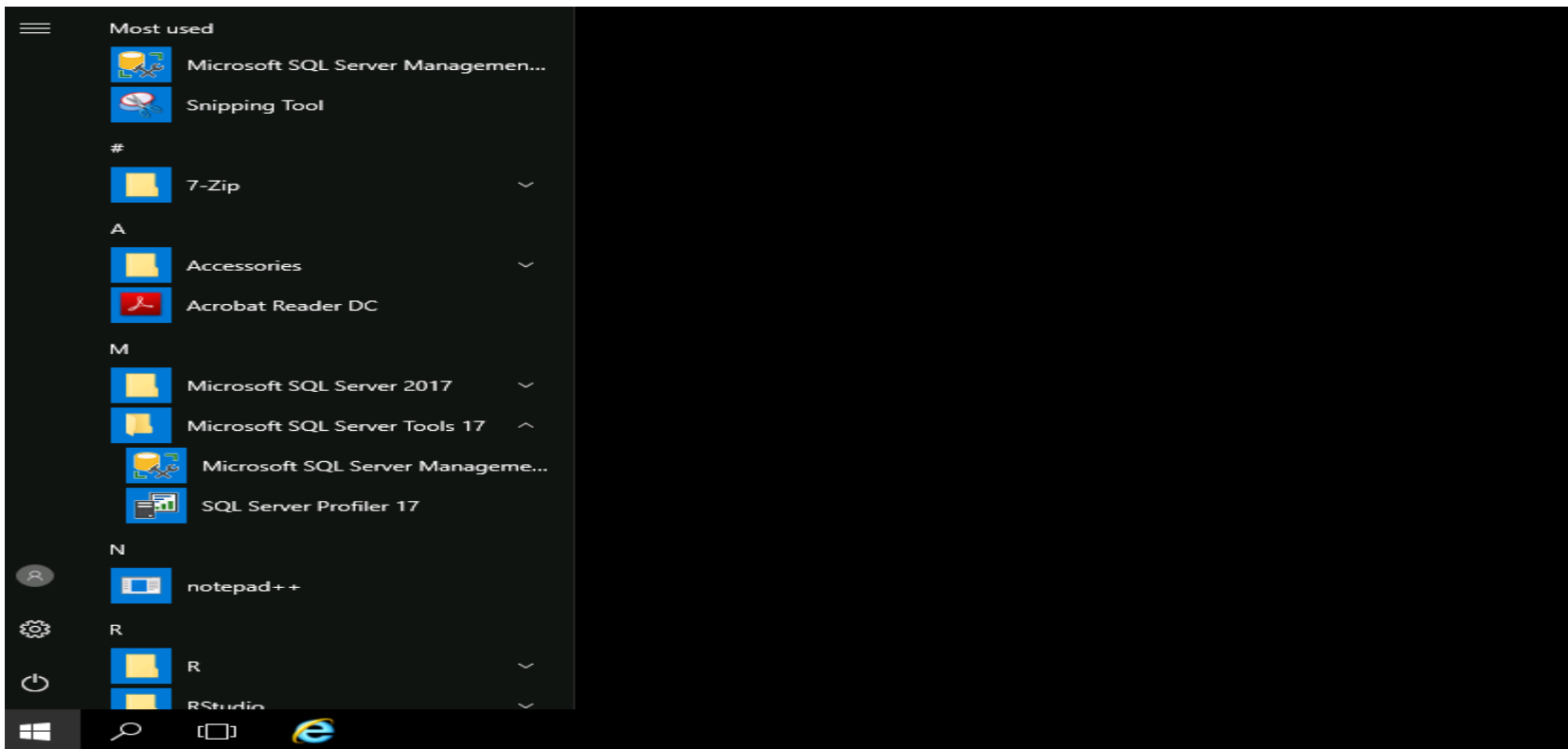
AZURE De-Identified Server Access - Instructions

8) You should then see a new desktop screen open on your computer – you now have accessed the AZURE De-Identified Server



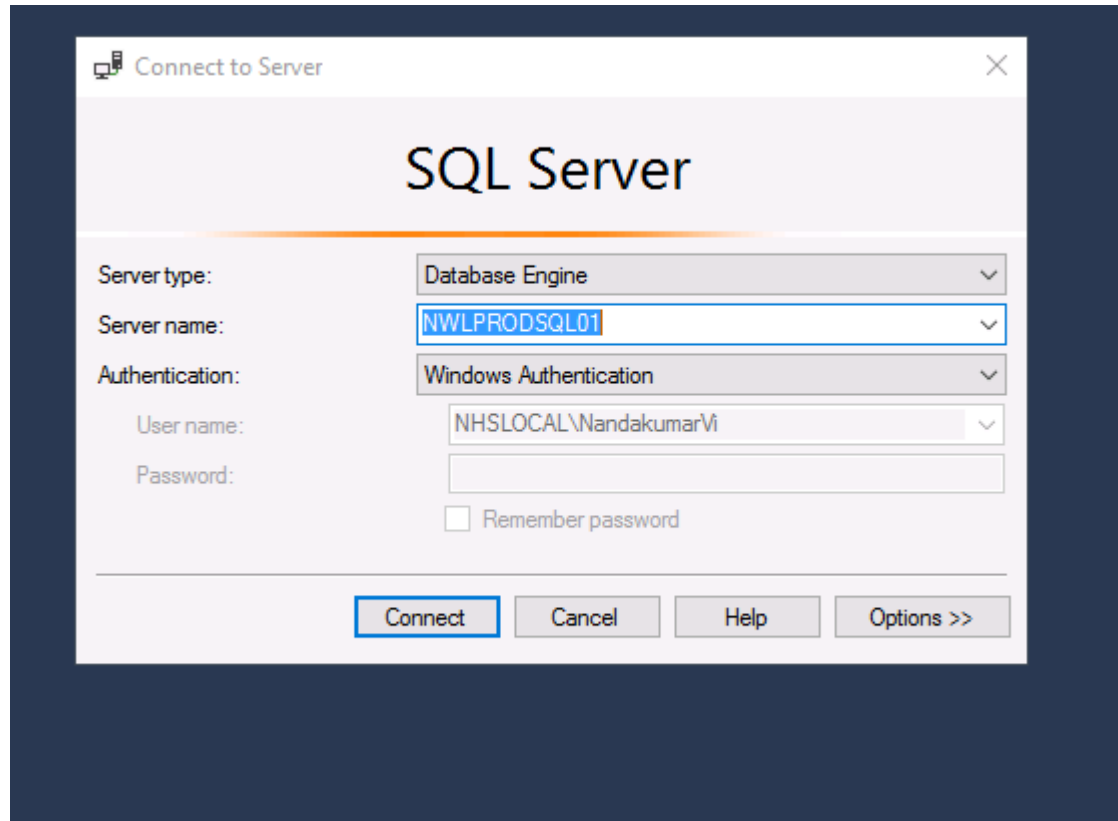
Connecting to SQL

- From inside the remote connection, open the Windows Menu and search Microsoft SQL Server Management Studio. Double click on the **Microsoft SQL Server Management Studio** (present under Microsoft SQL Server Tools 17) as per the below screen.



Connecting to SQL

- Once Microsoft SQL Server Management Studio is open you will need to connect to the database. In the 'Server name' box, type "NWLPRODSQL01 ", and connect using Windows Authentication



Connecting to SQL

- NWL_DeIdent_ISA_DW_Presentation is an anonymized data base and contains all the data.
- NWL_WSIC_DeIdent_Sandbox is an environment where the users can create their own objects/views and do analysis.
- UK_Health_Dimensions contains reference data and gets refreshed on a weekly basis.

Disconnecting from AZURE De-Identified Server

Click on the windows > user > signout to signout the Azure Virtual desktop

